

Synergy Simple Communications

The Synergy SimpleComm application is an all in one communications package designed to be used with the Synergy Controller. It provides a simple interface for sending and receiving commands over: RS-485, RS-232, IEEE 488 & TCP/IP.

The Synergy Controller supports over 130 unique commands, allowing for complete control and monitoring of your chamber from remote locations. You can find the Synergy Controller command set at Tidal Engineering's website www.tidalengineering.com. Navigate to the Synergy Controller page and look under the general information section for the Synergy Communications Commands Acrobat Reader file. This file contains a spreadsheet of all the available communication commands. The source code is also available on the web site for users who would like to develop their own communications programs. The source files are located on the Synergy Controller page and are linked to under the Downloads section.

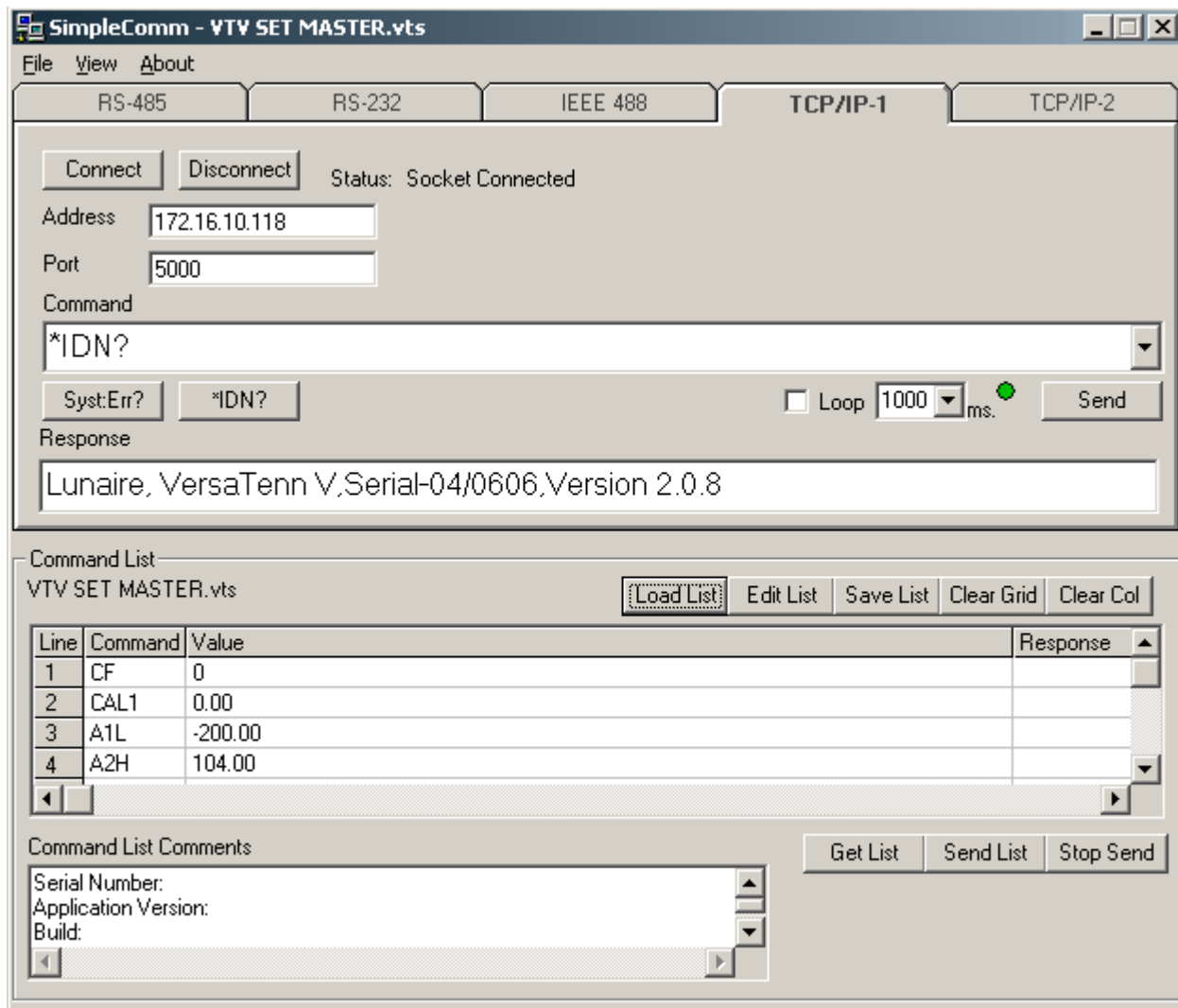


Figure 1 – Synergy SimpleComm

Installing SimpleComm

Insert the setup disk in the CDROM drive of your PC. Through your windows explorer, find the drive and double click on the setup.exe file. Alternatively, you may press Start / Run from your desktop. Follow the directions on the screen. You may be prompted to insert a second or third installation disk.

Connecting SimpleComm

The PC on which SimpleComm is running must be connected to the chamber. The method of connection depends on the desired mode of communications. RS-485 and 232 use serial cables, IEEE 488 uses a GPIB cable and TCP/IP uses network cables such as CAT5.

RS-485

To communicate over RS-485, plug a serial cable into the back of your PC and connect the other end to the serial port on the chamber. On the SimpleComm, press the RS-485 tab and set the port number to the same port number specified on your PC (Figure 2). To determine the port settings on the PC, go to Start/Settings/System, select the hardware tab, select Device Manager and expand the Ports icon. The Synergy Controller's RS-485 port settings are hard-coded to: 9600 baud rate, no parity, 8 data bits and 1 stop bit. Next, set SimpleComm's RS-485 address to the same address as the Synergy Controller V (Figure 3). The RS-485 Mode must be set to User Comms, if it reads UUT Sensors, change the setting.

Once the settings are complete, press the connect button. The status label will read: port open.

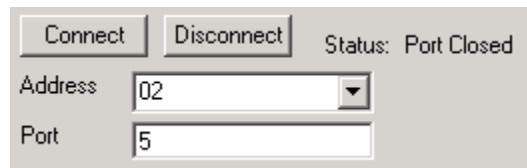


Figure 2 – SimpleComm

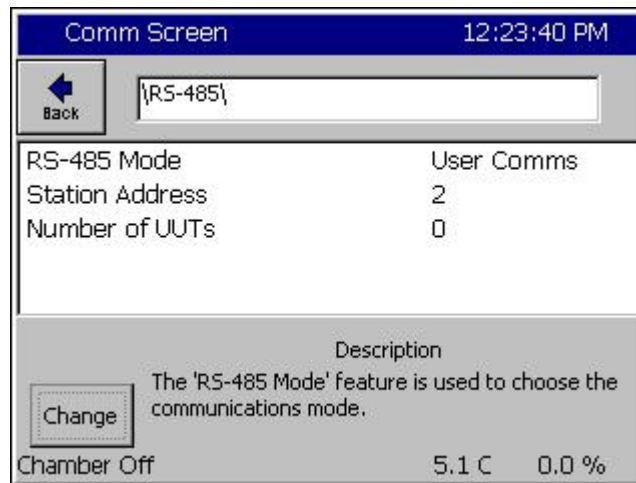


Figure 3 – Synergy Controller V

RS-232

To communicate over RS-232, plug a serial cable into the back of your PC and connect the other end to the serial port on the chamber. On the SimpleComm, press the RS-232 tab and set the port number to the same port number specified on your PC (Figure 4). To determine the port settings on the PC, go to Start/Settings/System, select the hardware tab, select Device Manager and expand the Ports icon. The Synergy Controller's RS-232 port settings are hard-coded to: 19200 baud rate, no parity, 8 data bits and 1 stop bit (Figure 5). RS-232 does not need address settings.

Once the settings are complete, press the connect button. The status label will read: port open.

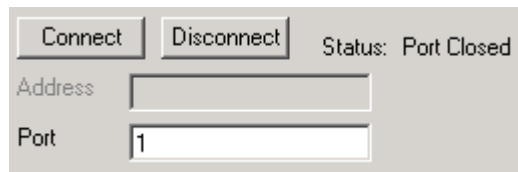


Figure 4 – SimpleComm

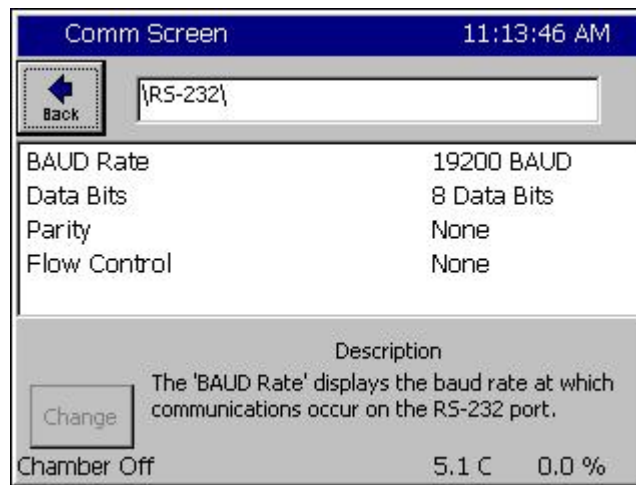


Figure 5 – Synergy Controller V

IEEE 488

To communicate over IEEE 488, you will need an IEEE 488 communications card installed in your PC. Plug a 488 cable into the back of your PC and connect the other end to the 488 port on the chamber. On the SimpleComm, press the IEEE 488 tab and set the port number to the same port number specified on your GPIB controller (Figure 6). Next, set SimpleComm's 488 address to the same address as the Synergy Controller V (Figure 7). The default Timeout is set to 1 second (1000 ms). The default sample rate for the IEEE 488 is 4 times per second. SimpleComm will query the chamber 4 times per second until the timeout period is reached.

IEEE 488 has no connect buttons; connections are made on an as needed basis. If a communication attempt fails, a popup window will notify the user of the error.



Figure 6 – SimpleComm

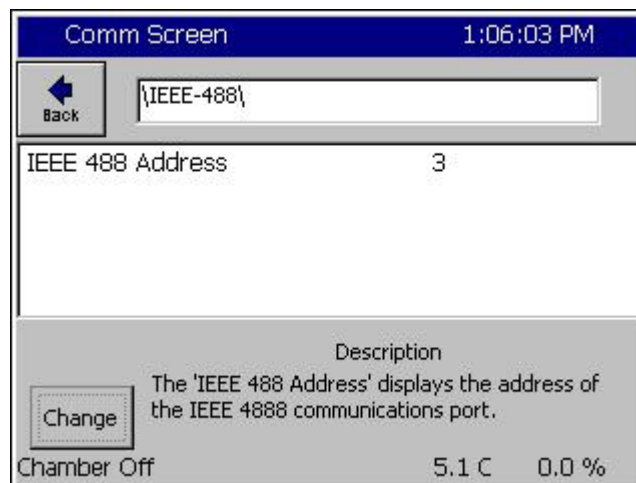


Figure 7 – Synergy Controller V

To view IEEE specific controls, press the properties button (Figure 6). From this window you may view and set the GPIB port and address (Figure 8). You can test the IEEE connection by pressing the test button. This test sends the *IDN? Command to the Synergy Controller V. The response will be displayed in the response test box (Figure 9). If there is no response it will display an error message.

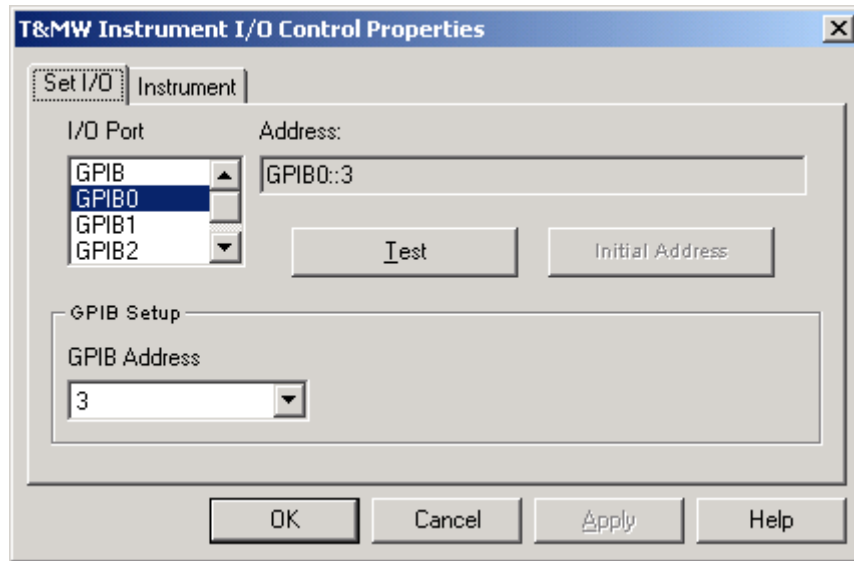


Figure 8 – TMW GPIB Control

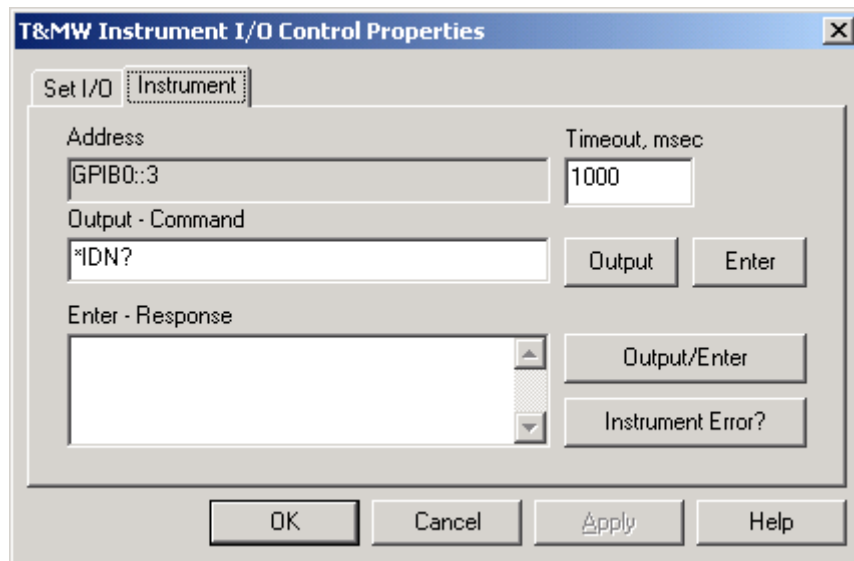


Figure 9 – TMW GPIB Control

TCP/IP

To communicate over TCP/IP, plug a network cable into the back of your PC and connect the other end to your LAN. You must also connect your chamber to a LAN. The Synergy Controller V requires a DHCP router to dynamically assign it an IP address. Once assigned the IP Address will appear in the Ethernet folder of the Synergy Controller (Figure 11). Set the SimpleComm to the same address (Figure 10). The default port for the chamber is 5000; always set SimpleComm's port to 5000. To enable the TCP/IP communications on the chamber, go to the TCP/IP Server folder and set it to enabled (Figure 12).

Once the settings are complete, press the connect button. The status label will read: socket connected.

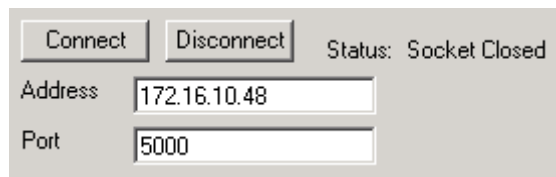


Figure 10 – SimpleComm

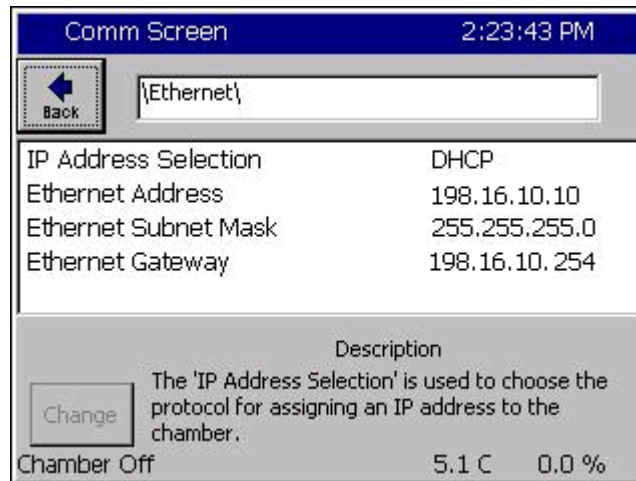


Figure 11 – Synergy Controller V

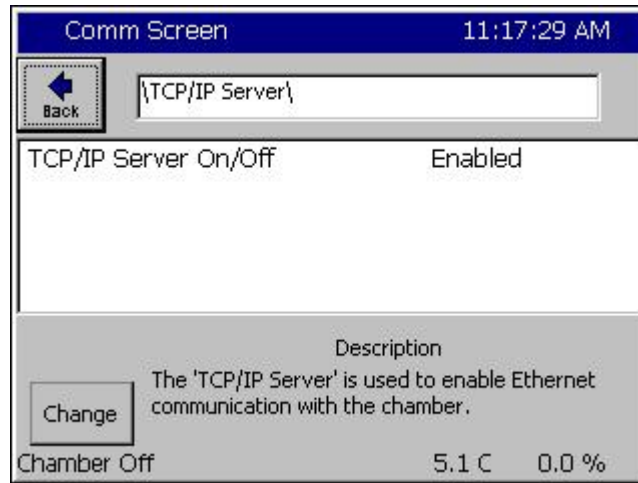


Figure 12 – Synergy Controller V

Sending and Receiving Commands

To send individual commands, first connect to the chamber, then type the command into the command text box, then either hit enter or press the send button. The reply from the chamber will be displayed in the response text box. All query commands are preceded with a “?” and all set commands are preceded with an “=” (Figures 13 & 14).

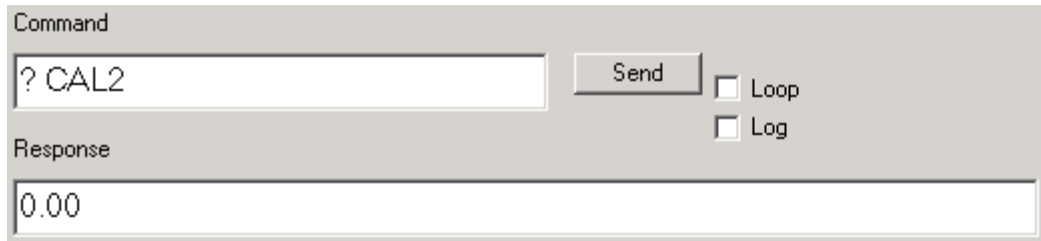


Figure 13 – Sending Query Commands

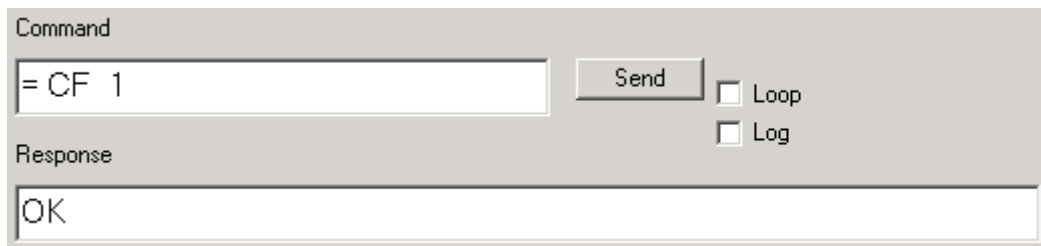


Figure 14 – Sending Set Commands

The RS-485 commands are a special case. Normally commands over RS-485 are preceded by a greater than symbol and the address, “>02 ? CAL2” and all responses are similarly preceded, “<02 0.00”. SimpleComm automatically prefixes the commands so it is not necessary for you to.

Sending and Receiving Command Loops

To send an individual command multiple times, such as monitoring the temperature “? C1”, select the loop check box (Figure 13). The command string will be sent once a second as long as the loop box remains checked. The response box will display each reply as it is received.

To change the sample rate, select the File menu and Preferences. Select the sample rate you desire and press OK (Figure 15). The default sample rate is 1 second.

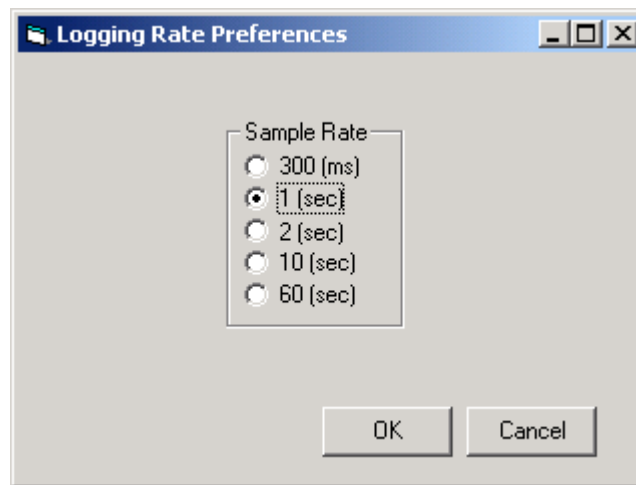


Figure 15 – Sample Rate

TCP/IP has an additional logging feature that logs all responses to the looped queries to a file called log.txt. It is located in the SimpleComm’s root directory.

Neither looping nor logging will function while you are sending or getting settings lists.

Settings Lists

Settings Lists are lists of commands that get a snapshot chamber’s current configuration or set a chamber to a preconfigured state. If you have multiple chambers and would like them all set to the same state, you can configure one chamber and get all its parameter values and save them to a Settings List. You can then use this list to send these values up to the other chambers, quickly putting them all in the same configuration.

Settings Lists are simple text files and can be edited in notepad if desired. Commented lines must be preceded by a double slash. When loaded the comments are displayed in the Memo field (Figure 16).

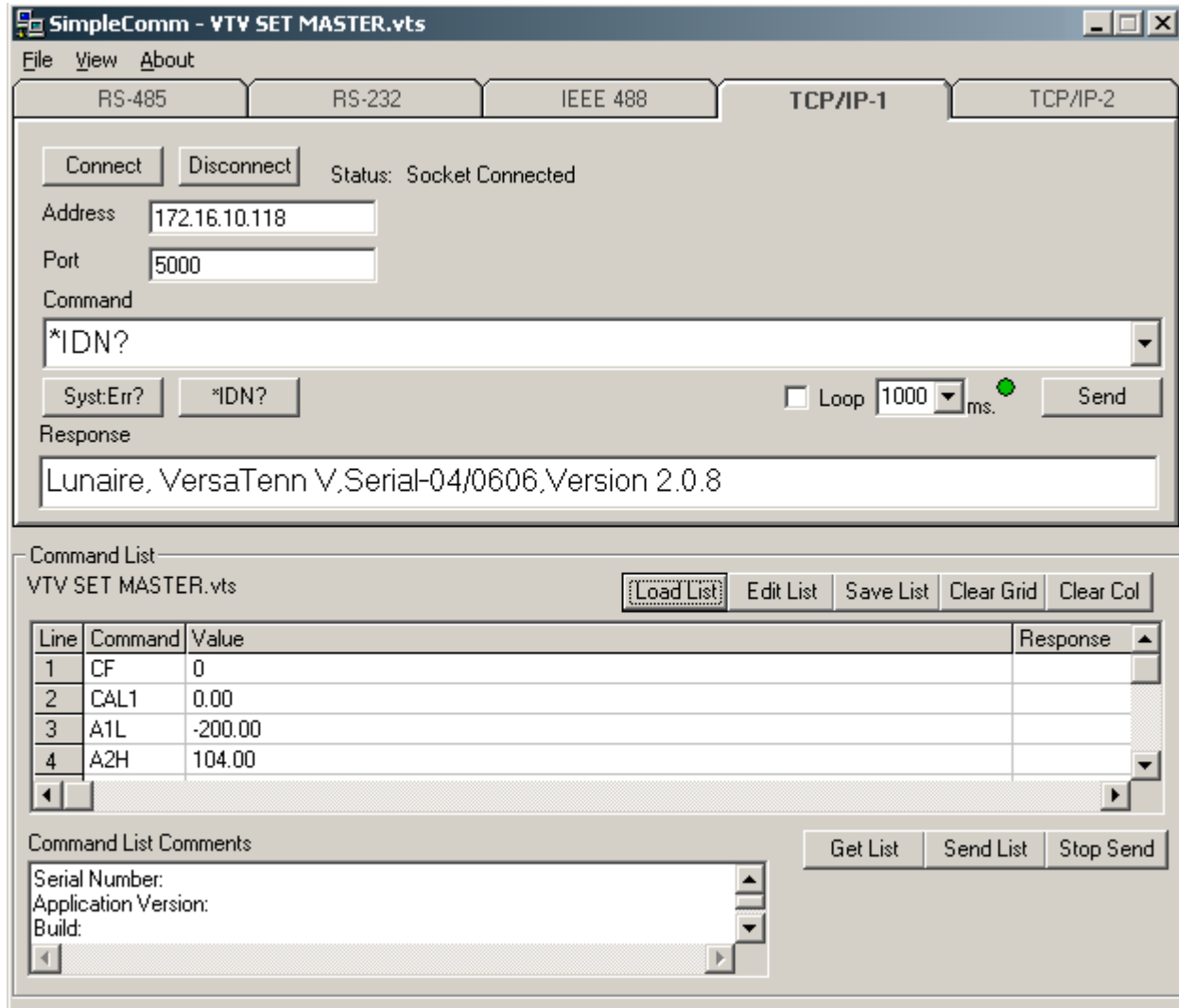


Figure 16 – Settings Lists

Downloading, Editing and Uploading Chamber Settings

When upgrading a chamber to a new application version you will lose all your chambers configuration settings and PID tunings. It is a good idea to save all the configuration settings in a separate text file *before* upgrading. After you upgrade you can then reconfigure your chamber to all the previous settings and PID tunings. You may use a simple checklist, such as the one available in the User Manual, and record all the items manually. Alternatively, you may use SimpleComm. SimpleComm has simplified the task of downloading and uploading chamber settings by assembling a precompiled list of commands to automatically query your chambers settings, saving them and uploading them to your new chamber.

To open a Settings List press the Load List button. Select a file and press OK. The name of the loaded file is displayed on the title bar. The content of the list appears in the Settings List data grid. The Settings column holds the commands. The Value

column holds the values for the commands. The Set Response column holds the chamber's responses from set commands.

To edit an item in the list, press the Edit List button. Enter your changes and press Save As or Cancel. Clicking in the Comments box and typing additional lines will add text to the Comments field. You can clear the entire list, including commands, by pressing the Clear List button. Alternatively you can clear selected columns by highlighting the column and pressing the Clear Col button.

Getting Data

To get the current configuration of a chamber, load a Settings List that is a list of commands. SimpleComm automatically installs a master list of the most important commands. The list is named "VTV GET MASTER.VTS" and it is stored in the root installation directory of the SimpleComm program. Once loaded, make sure you are connected and press the Get List button. SimpleComm will query the chamber one command at a time until it has gone through the entire list. After each query is sent to the chamber, SimpleComm will wait until it receives a response before trying to get the next value. As each response arrives it is placed in the corresponding cell in the Value column. When the entire list has been transferred a popup window will state that the transfer is complete.

After you have gathered your chambers settings, press the Save List button to save the list. SimpleComm automatically installs a master list of the most important commands and their respective settings for a new chamber. The list is named "VTV SET MASTER.VTS" and it is stored in the root installation directory of the SimpleComm program. We suggest saving your new chamber settings either over this file or in a new file with an appropriate descriptive name identifying the chamber.

Sending Data

To send your upgraded chamber the original configuration settings, load the Settings List you created in the previous step. Once loaded, make sure you are connected and press the Send button. SimpleComm will set the chamber one command at a time until it has gone through the entire list. After each set command is sent to the chamber, SimpleComm will wait until it receives an "OK" response before trying to get the next value. As each "OK" response arrives it is placed in the corresponding cell in the Set Response column. When the entire list has been transferred and popup window will state that the transfer is complete.

Get Settings List Example:

```
\\Serial Number: 06/0201
\\Version: 1.4.10
CF
CAL1
A1L
```

Set Settings List Example:

```
\\Serial Number: 06/0201
\\Version: 1.4.10
CF 0
CAL1 0.00
A1L -200
```

Important Note:

Make sure that you always have the chamber set to the same temperature scale for downloading and uploading operations. If you download from a chamber in Centigrade mode, then upload to a chamber that is in Fahrenheit, you will have numerous incorrect settings.

Additionally, all Communication settings, cascade registration keys and web server registration keys will need to be recorded and reentered manually. The table below is a list of these settings. These settings are not part of the sensitive tunings of you chamber and are not absolutely necessary to save.

Registration Keys

| | |
|-----------------------------|-------|
| Web Server Registration Key | _____ |
| Cascade Registration Key | _____ |

Communications

| | |
|-----------------------|-------|
| <u>RS-485</u> | |
| RS-485 Mode | _____ |
| Station Address | _____ |
| Number of UUTs | _____ |
| <u>IEEE-488</u> | |
| IEEE 488 Address | _____ |
| <u>Ethernet</u> | |
| IP Address Selection | _____ |
| Ethernet Address | _____ |
| Ethernet Subnet Mask | _____ |
| Ethernet Gateway | _____ |
| <u>Web Server</u> | |
| Web Server On/Off | _____ |
| Web Server Login Name | _____ |
| Web Server Password | _____ |
| Web Server Address | _____ |
| <u>TCP/IP Server</u> | |
| TCP/IP Server On/Off | _____ |

Visual Basic Source Code

Tidal Engineering provides the source code for the Synergy SimpleComm application as a reference guide for developers. We recommend that you use Visual Basic 6.0 or higher and Windows 2000 or higher.

Before you install the source code, you must install the Synergy SimpleComm application, which contains a TMW GPIB component that is needed to run the program in Visual Studio. To install the source code, download the files from the Tidal Engineering web site. Double click on the Setup.exe file and follow the installation directions. Start Visual Studio and open the Visual Basic Project file, SimpleComm.vbp. The source code and forms are fully editable.

Communications Source Code

There are several key code portions that form the basis of communication over serial ports, TCP/IP and GPIB. The selections are discussed below and are broken into three areas: settings & connecting, sending data, and receiving data. These sections of code can be cut and pasted into your own programs, thus adding quick and simple communication routines to your applications.

Setting & Connecting

Setting & Connecting with RS 232 & RS 485

```
' If your not connected, then connect
If (Not MSComm1(Index).PortOpen) Then
    ' Set the Comm Port number to the value in the Comm Port text box
    MSComm1(Index).CommPort = Val(txtPort(Index).Text)
    ' Set Baud Rate and Parity
    MSComm1.Settings = "9600,N,8,1" 'RS 485
    MSComm1.Settings = "19200,N,8,1" 'RS 232
    ' Open the port
    MSComm1(Index).PortOpen = True
    MSComm1(Index).InputLen = 0
    MSComm1(Index).RThreshold = 1
End If
```

Setting & Connecting with GPIB

```
' Set the timeout to the value in the timeout box (milliseconds)
TMWControl1.TimeOut = Trim(Str(Val(txtTimeout488.Text)))
' Set the address to the value in the address box
' final address will appear as: GPIB0::1::INSTR
TMWControl1.address = "GPIB" & Trim(Str(Val(txtPort(Index).Text))) & "::" &
Trim(Str(Val(txtAddress(Index).Text))) '& "::INSTR"
```

Setting & Connecting with TCP/IP

```
' If your not connected, then connect
If tcpClient1.State <> sckConnected Then
    ' IP address "###.###.###.###"
    ' Set the address to the value in the address box
    tcpClient1.RemoteHost = txtAddress(Index).Text
    ' Set the port to the value in the port box
    tcpClient1.RemotePort = txtPort(Index).Text
    ' Close it first – just in case
    While tcpClient1.State <> sckClosed
        tcpClient1.Close
    Wend
    ' Connect
    tcpClient1.Connect
End If
```

Sending

Sending with Serial Ports

```
' If your not connected, tell the user
If (Not MSComm1(Index).PortOpen) Then
    MsgBox ("The RS 485 port is not connected. Please connect and try again.")
End If
' Clear buffer
a$ = MSComm1(Index).Input
txtIn(Index).Text = ""
' Send the command in the command text box
MSComm1(Index).Output = txtOut(Index).Text & vbCr
' The 485 send requires a ">" and the address such as "02" in the string. Use:
' MSComm1(Index).Output = ">" & cboAddress485.Text & " " & txtOut.Text & vbCr
```

Sending with GBIB

```
' Create a global variable to hold a timer counter
Global GPIBResult as Integer
' Send the command in the command text box
TMWControl1.Output (txtOut(Index).Text & vbCr)
```

Sending with TCP/IP

```
' If tcp/ip1 is not connected, close it and tell the user
If tcpClient1.State <> sckConnected Then
    'IP address "###.###.###.###"
    ' Set the address to the value in the address box
    tcpClient1.RemoteHost = txtAddress(Index).Text
    ' Set the port to 5000
    tcpClient1.RemotePort = 5000
    While tcpClient1.State <> sckClosed
        tcpClient1.Close
    Wend
    MsgBox ("TCP/IP1 is not connected. Please connect and try again.")
End If
' If tcp/ip1 is connected,
' Send the command in the command text box
If tcpClient1.State = sckConnected Then
    tcpClient1.SendData txtOut(Index).Text & vbCr
End If
```

Receiving

Receiving with Serial Ports

```
' MSComm1 is the name of the Microsoft Comm component
Private Sub MSComm1_OnComm(Index As Integer)
    Select Case MSComm1(Index).CommEvent
        ' Events
        Case comEvSend           ' SThreshold # of characters in transmit buffer.
        Case comEvEOF           ' An EOF charater was found in the input stream
        Case comEvReceive       ' Received RThreshold # of chars
            ' Receive the data and write the result in the response text box
            txtIn(Index).Text = txtIn(Index) & MSComm1(Index).Input
        End Select
    End Sub
```

Receiving with GPIB

```
' The GPIB contro has no receive event, it must be queried for a response.
' timerGPIB counts down from 2 to 0, decrementing in the Timer1 function.
' Timer1 fires every 250 milliseconds
' This allows us to check for a response 4 times a second.
timerGPIB = 2
GPIBResult = "" 'tracks GPIB reply - see Timer1 function
' While loop will exit after receives a reply or times out - see Timer1 function
While timerGPIB > 0
    DoEvents
Wend
' If we don't receive a reply in 1 second, time out
If GPIBResult = "" Then 'no reply
    txtIn(Index).Text = "Timeout: " & TMWControl1.TimeOut/1000 & "seconds."
Else
    ' Write the reply to the response text box
    txtIn(Index).Text = GPIBResult 'GPIB value
End If

'--- Timer1 function: fires every 250 ms ---
' Timer1 queries 4 times per second and jumps out of while loop once every 1 second
If timerGPIB > 0 Then
    ' Check for a response to the previous Send query
    TMWControl1.Enter result$
    ' If we receive a result we break the previous Do Events loop
    If result$ <> "" Then
        'Set global variable to response value
        GPIBResult = result$
        timerGPIB = 0
        ' Breaks out of previous While loop and records response
    Else
        ' Increment timerGPIB
        timerGPIB = timerGPIB - 1
    End If
End If
End If
```

Receiving with TCP/IP

```
' tcpClient1 is the name of the Microsoft TCP Client component
Private Sub tcpClient1_DataArrival(ByVal bytesTotal As Long)
    Dim strData As String
    ' Get data
    tcpClient1.GetData strData
    ' Write the response in the response test box
    txtIn(3).Text = Replace(strData, vbCrLf, "", 1, -1, vbBinaryCompare)
End Sub
```

This concludes the SimpleComm demonstration. For more information concerning SimpleComm, consult the Synergy Controller Technical Manual on our website and/or contact technical support at the factory.

About Tidal Engineering

Headquartered in Randolph, NJ, Tidal Engineering Corporation has been designing and building award-winning embedded hardware and software for test and measurement and data acquisition applications since 1992. The company is recognized for technical expertise in such areas as Embedded IEEE 488, and turnkey SCADA (Supervisory Control and Data Acquisition) systems. Tidal's products are available exclusively through ADI American Distributors Inc., an ISO-9002 certified distributor of electronic and electromechanical components and assemblies.

Tidal Engineering Corporation
2 Emery Avenue
Randolph, NJ 07869
Tel: 973/328-1173
Fax: 973/328-2302
www.TidalEng.com
info@tidaleng.com